

TERRENO RESOURCES CORPORATION

LAS CUCHARAS GOLD AND SILVER PROJECT
NAYARIT, MEXICO

TERRENO RESOURCES CORPORATION

DISCLAIMERS

Forward-Looking Information

This Presentation contains “forward-looking information” and “forward looking statements” within the meaning of applicable Canadian and United States securities legislation. Forward-looking information may include, but is not limited to, the anticipated production and developments in our operations in future periods, information with respect to our planned exploration and development activities, the adequacy of our financial resources, the estimation of mineral reserves and resources, realization of mineral reserve and resource estimates and timing of development of our Las Cucharas Project, costs and timing of future exploration, results of future exploration and drilling, production and processing estimates, capital and operating cost estimates, timelines and similar statements relating to the economic viability, timing and receipt of approvals, consents and permits under applicable legislation, our executive compensation approach and practice, the composition of our board of directors and committees and adequacy of financial resources. Wherever possible, words such as “plans”, “believes”, “targets”, “expects”, “projects”, “assumes”, “budget”, “strategy”, “anticipates”, “scheduled”, “estimates”, “forecasts”, “intends”, and similar expressions or statements that certain actions, events or results “may”, “could”, “would”, “might” or “will” be taken, occur or be achieved, or the negative forms of any of these terms and similar expressions, have been used to identify forward-looking statements and information. Statements concerning mineral reserve and resource estimates may also be deemed to constitute forward-looking information to the extent that they involve estimates of the mineralization that will be encountered if the property is developed. Any statements that express or involve discussions with respect to predictions, expectations, beliefs, plans, projections, objectives, assumptions or future events or performance are not statements of historical fact and may be forward-looking information. Forward-looking information is based on the expectations and opinions of our management on the date the statements are made. Forward-looking information is subject to a variety of known and unknown risks, uncertainties and other factors that could cause actual events or results to differ from those expressed or implied by the forward-looking information. The assumptions used in the preparation of such statements, although considered reasonable at the time of preparation, may prove to be imprecise. Currency - all dollar values herein are in US \$ unless otherwise indicated. We do not assume any obligation to update forward-looking information, whether as a result of new information, future events or otherwise, other than as required by applicable law. For the reasons set forth above, prospective investors should not place undue reliance on forward-looking information.

TERRENO RESOURCES CORPORATION

COMPANY INFORMATION – TNO.H:NEX

DIRECTORS AND OFFICERS

George A. Brown - CEO, President, and Director
Carmen Yuen, CPA - Treasurer
Cary Pothorin, P.Ge. - V.P. Exploration
Joseph Del Campo, CMA - Director & Audit Chairman
Richard Williams, LLB - Director

TECHNICAL COMMITTEE

Thomas Skimming, B.Sc., P.Eng.
Wayne Valliant, B.Sc., P.Ge.

SHARE STRUCTURE (AS OF SEPT 2, 2021)

Issued Shares - 51,561,506
Warrants - 800,000 at \$0.07
Options - 2,450,000 at \$0.05
Fully Diluted - 54,811,506

TERRENO RESOURCES CORPORATION

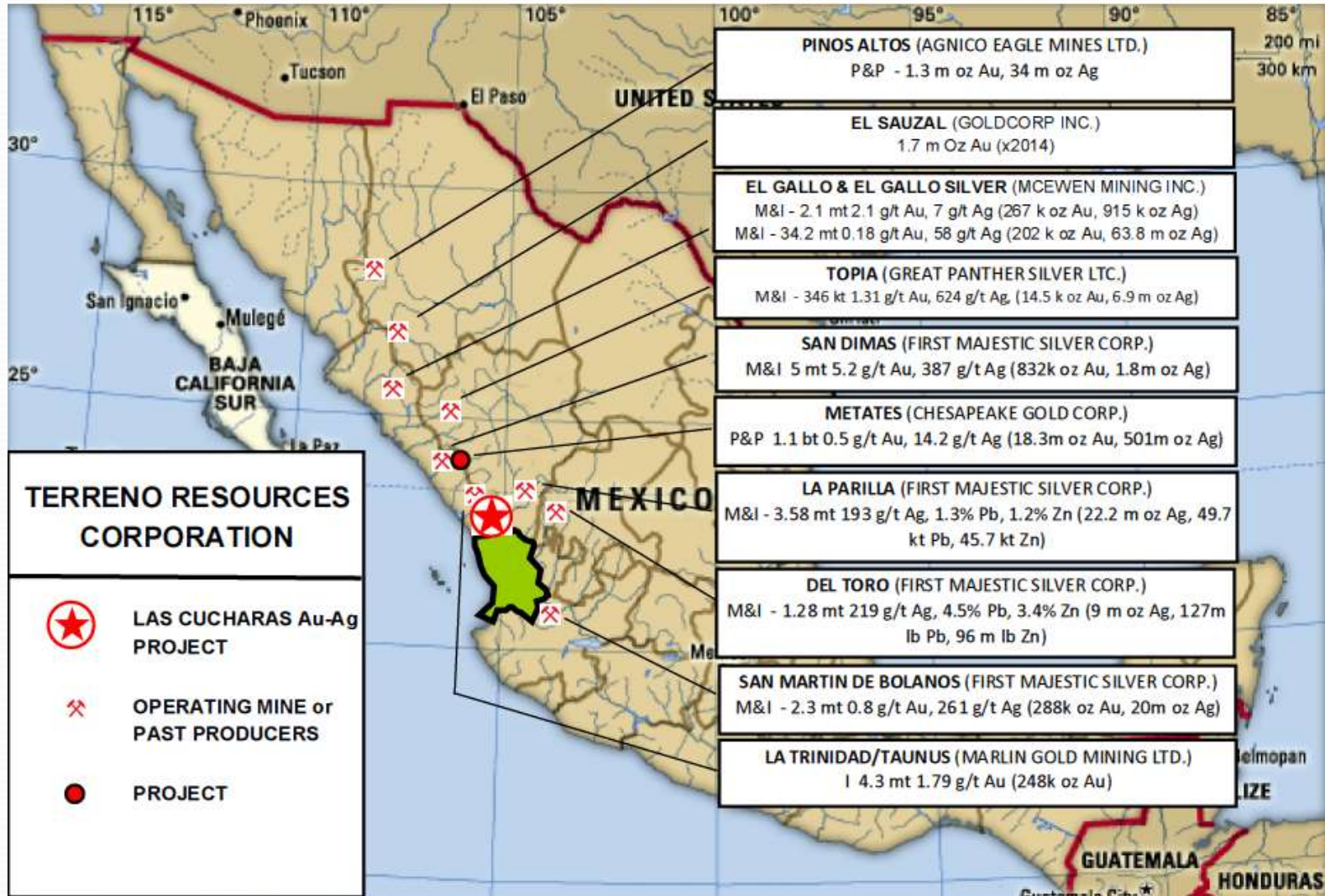
LAS CUCHARAS Au-Ag PROJECT - NAYARIT, MEXICO

- FOCUS ON MEXICO
- EXPERIENCED MANAGEMENT and EXPLORATION TEAM
- LAS CUCHARAS PROJECT LOCATED IN THE SIERRA MADRE OCCIDENTAL (SMO) PRECIOUS METAL CORRIDOR
- HISTORICAL PRODUCTION OF 3,000 kg Au; 30,000 kg Ag (96,450 oz Au, 964,500 oz Ag)
- MINERALIZED ZONE +6 km IN STRIKE LENGTH WITH SIGNIFICANT Au-Ag DRILL RESULTS

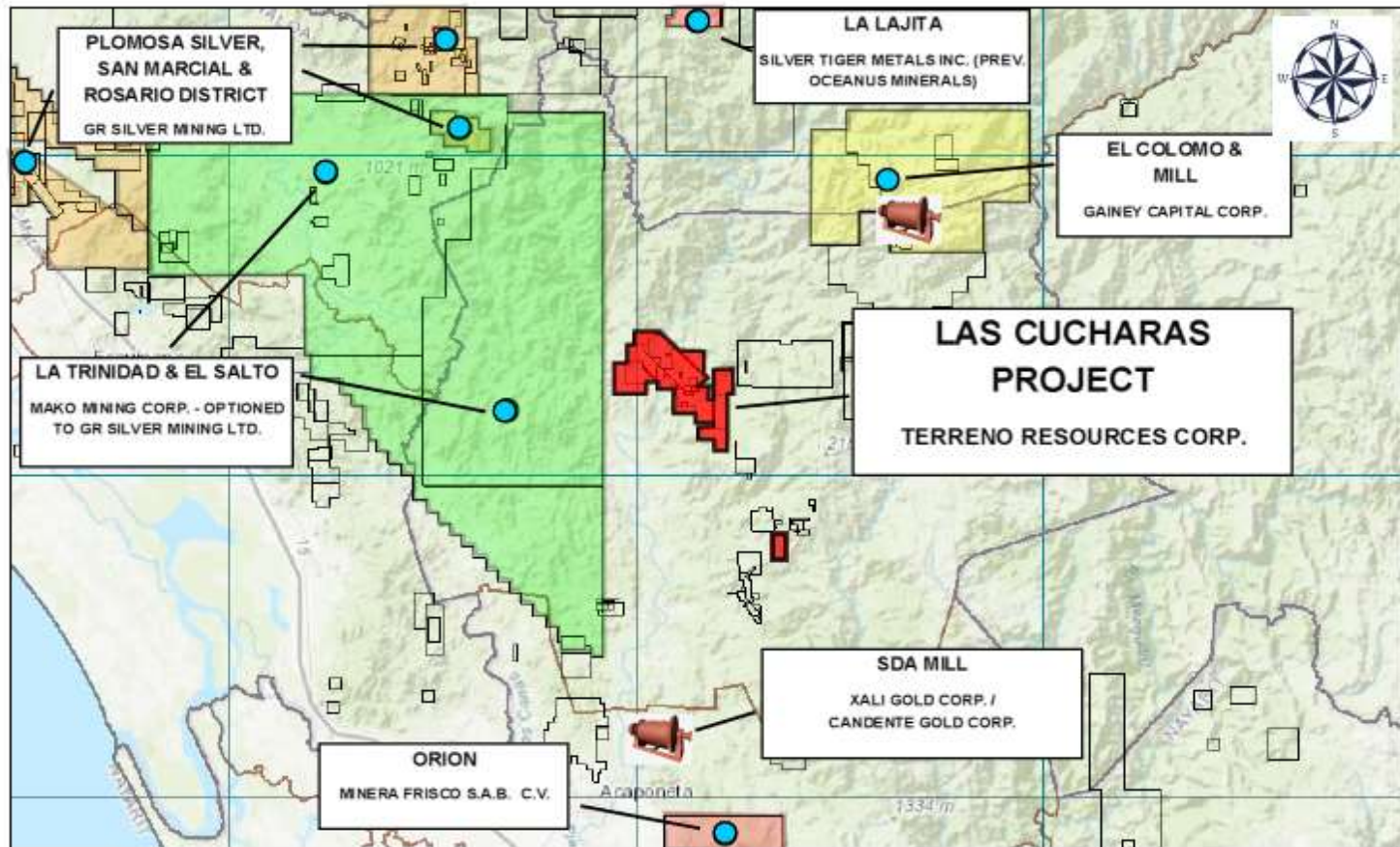
TERRENO RESOURCES CORPORATION



TERRENO RESOURCES CORPORATION

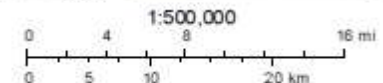


TERRENO RESOURCES CORPORATION



June 24, 2020

- Concesión Minera
- ESTADOS
- MUNICIPIOS
- CARTA50000



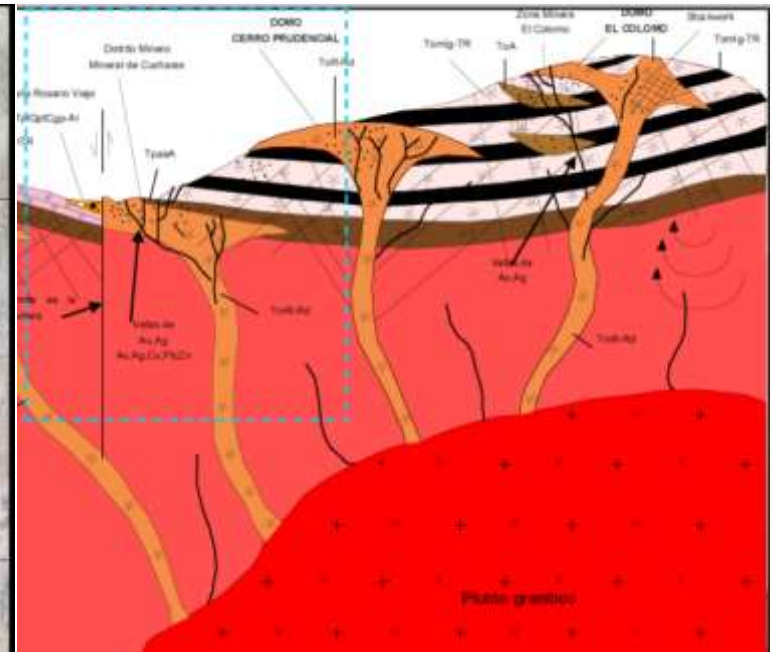
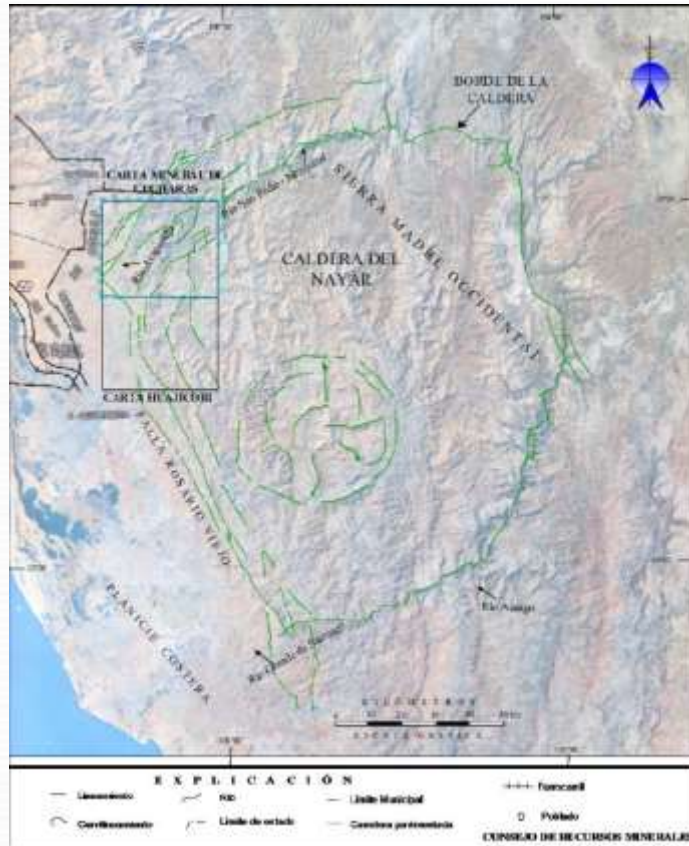
Sources: Esri, HERE, Garmin, Intermap, increment P Corp., GEBCO, USGS, FAO, NPS, NRCAN, Geobase, IGN, Kadaster NL, Ordnance Survey, Esri, Dirección de Cartografía y Concesiones Mineras
 Esri, HERE, Garmin, USGS, NGA, EPA, USDA, NPS

TERRENO RESOURCES CORPORATION

NAYAR CALDERA

REGIONAL GEOLOGICAL ENVIRONMENT AND STRUCTURAL INFLUENCE

CONCEPTUAL GEOLOGICAL MODEL OF LAS CUCHARAS REGION



REF: INFORME de la CARTOGRAFIA GEOLOGICO, MINERA, Y GEOQUIMICA ESCALA 1:50,000, CARTA MINERAL DE CUCHARAS, CLAVE F13A59 ESTADOS DE NAYARIT Y DURANGO, COREMI/SGM (SALDANA-SAUCCEDO et al, 2001).

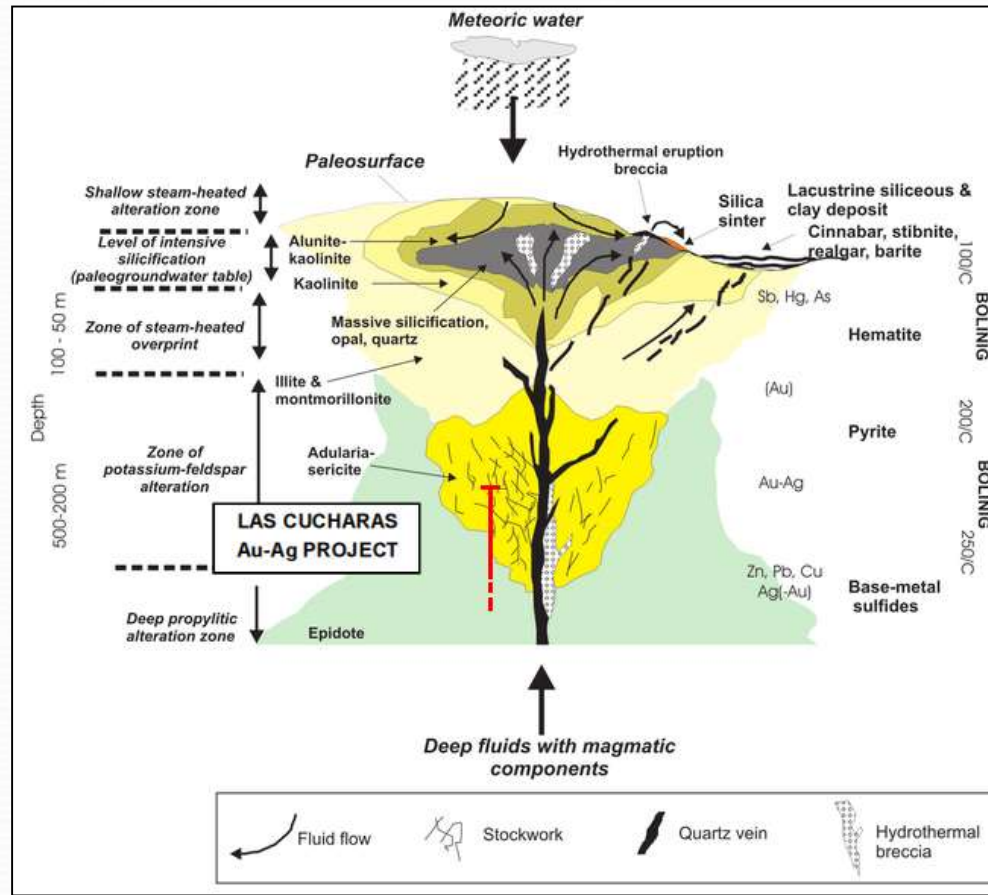
TERRENO RESOURCES CORPORATION

LAS CUCHARAS Au-Ag PROJECT

GEOLOGICAL MODEL of a LOW SULFIDATION Au-Ag VEIN SYSTEM

SURFACE and CORE SAMPLES SHOWING TYPICAL LS TEXTURES

IMAGE MODIFIED AFTER BUCHANAN (1981), MORRISON et al (1990), CORBETT and LEACH (1997), MOLNAR et al. (1999)

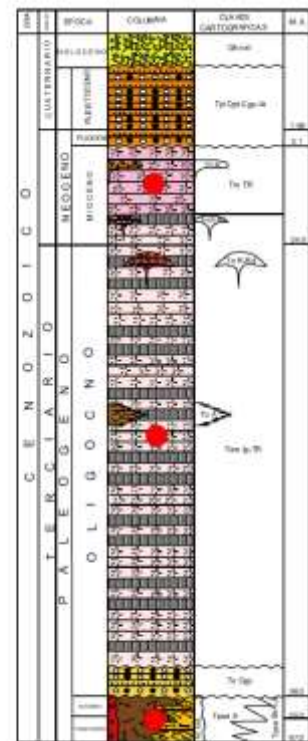
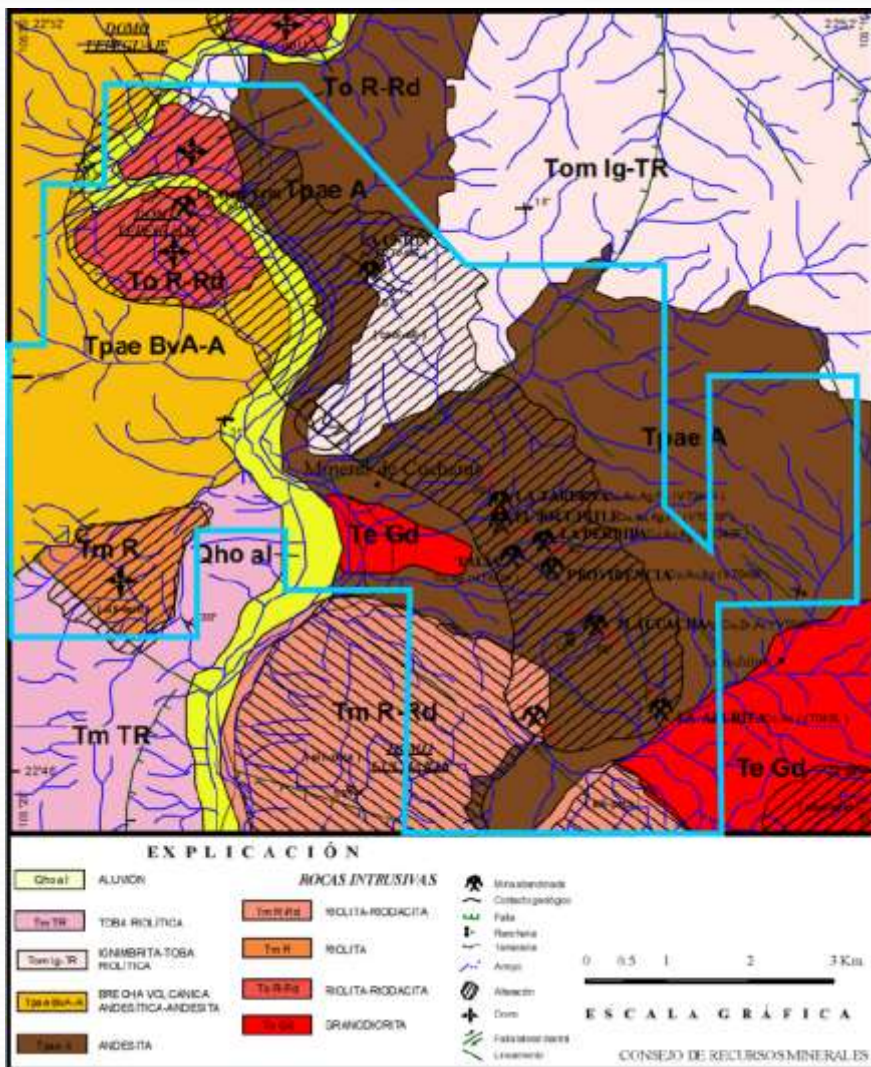


TERRENO RESOURCES CORPORATION

LAS CUCHARAS PROPERTY GEOLOGY

- BLUE OUTLINE SHOWS PARTIAL LIMITS OF LAS CUCHARAS CONCESSIONS

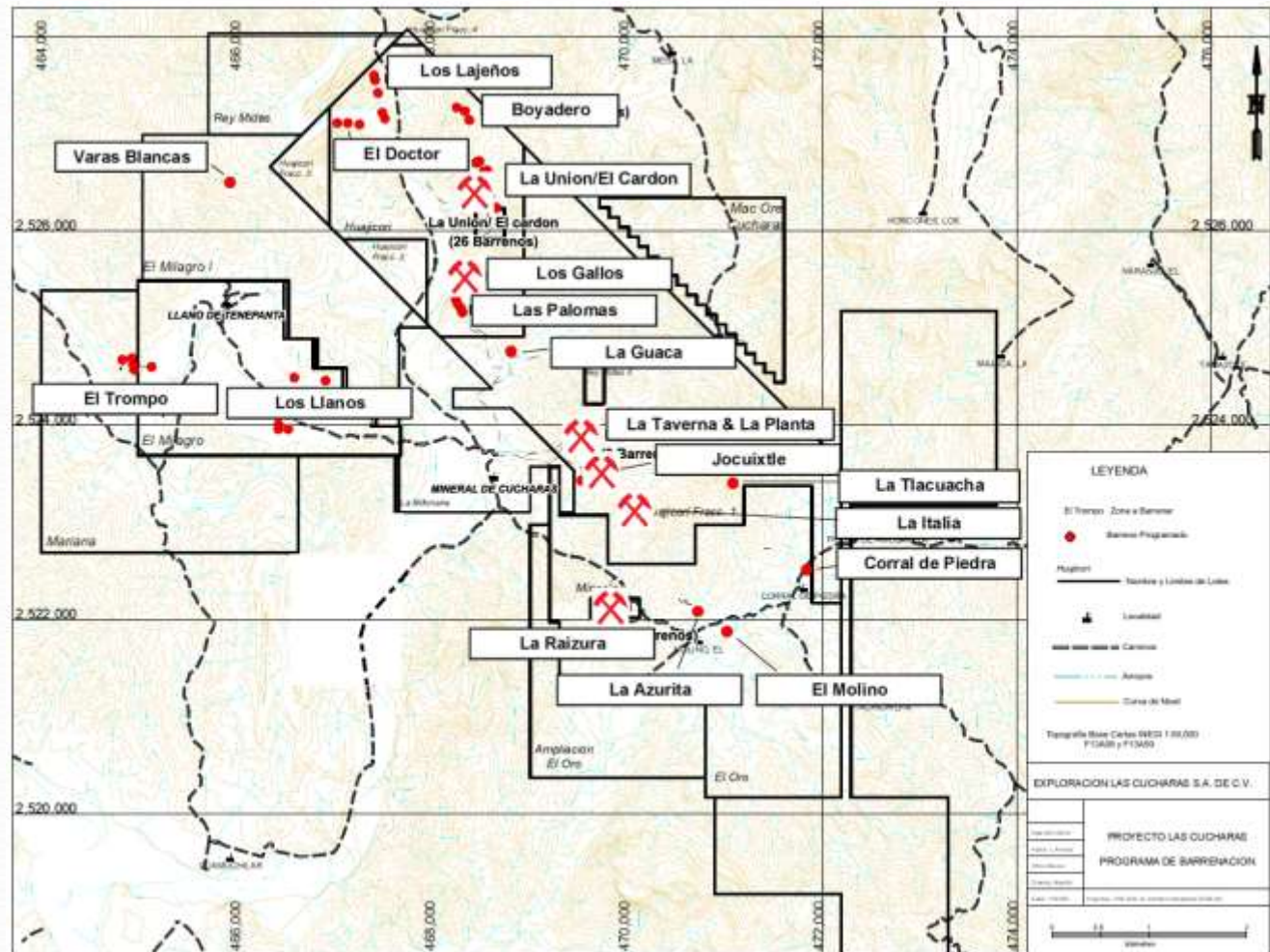
- DIAGONAL SHADING SHOWS ALTERATION ZONES



REF: INFORME de la CARTOGRAFIA GEOLOGICO, MINERA, Y GEOQUIMICA ESCALA 1:50,000, CARTA MINERAL DE CUCHARAS, CLAVE F13A59 ESTADOS DE NAYARIT Y DURANGO, COREMI/SGM (SALDANA-SAUCEDO et al, 2001).

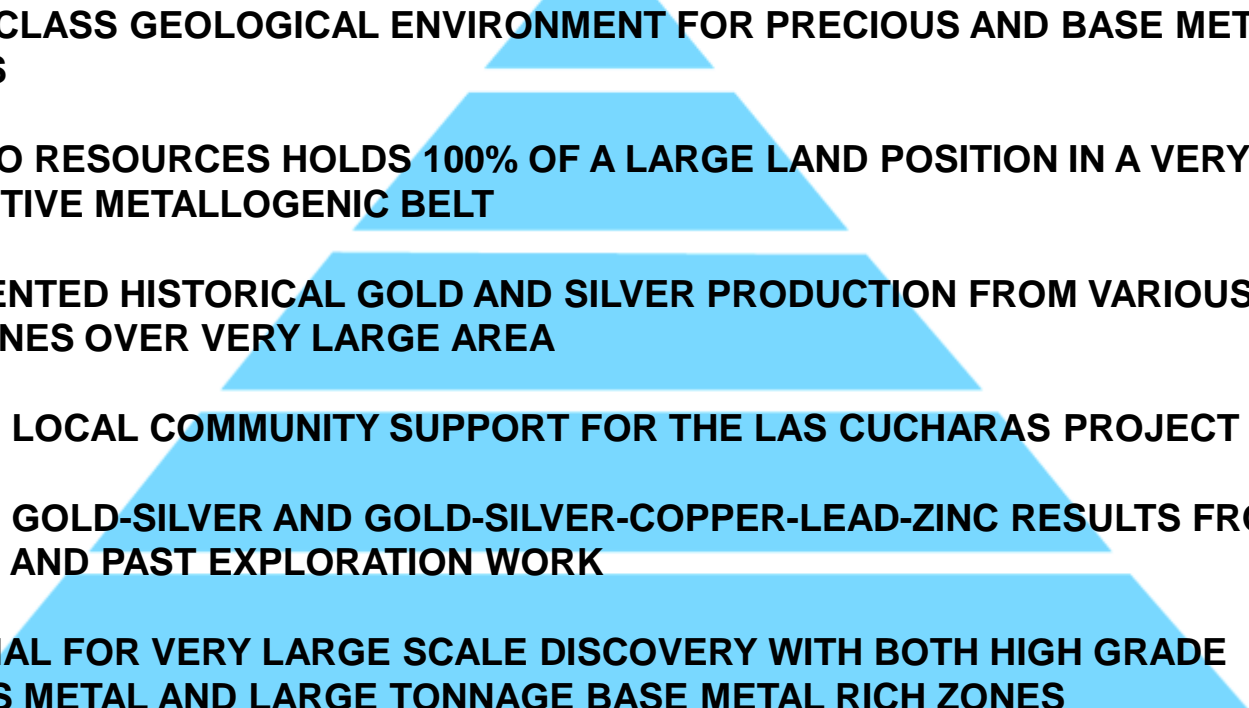
TERRENO RESOURCES CORPORATION

- 4,229 Ha AREA in 16 CONTIGUOUS CONCESSIONS
- 4.5 HOUR DRIVE FROM MAZATLAN
- 17+ DOCUMENTED Au-Ag SHOWINGS ON PROPERTY
- STRONG DRILL RESULTS FROM PAST OPERATORS



TERRENO RESOURCES CORPORATION

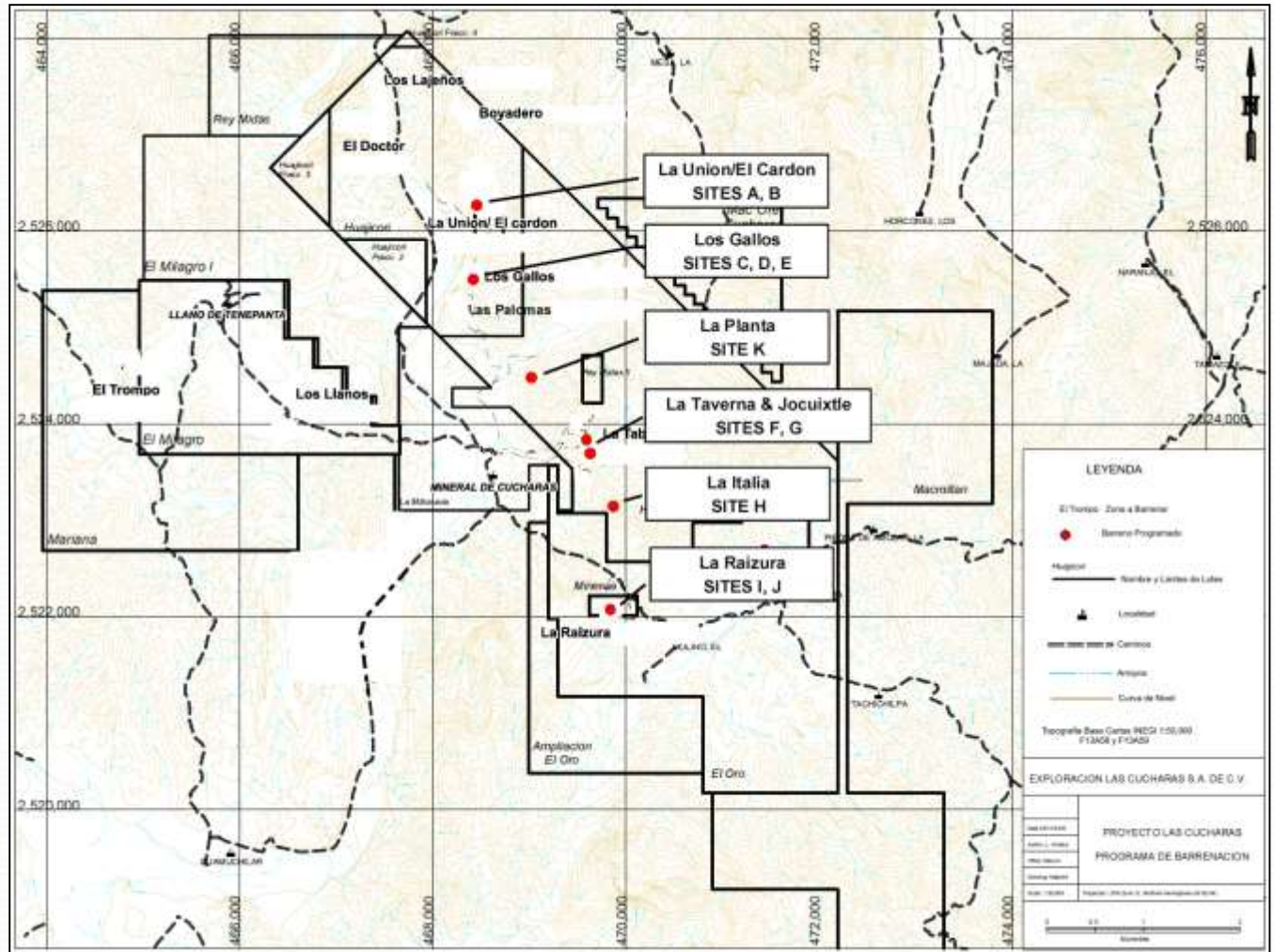
LAS CUCHARAS Au-Ag PROJECT - 2021 DRILL PROPOSAL

- 
- **WORLD CLASS GEOLOGICAL ENVIRONMENT FOR PRECIOUS AND BASE METAL DEPOSITS**
 - **TERRENO RESOURCES HOLDS 100% OF A LARGE LAND POSITION IN A VERY PROSPECTIVE METALLOGENIC BELT**
 - **DOCUMENTED HISTORICAL GOLD AND SILVER PRODUCTION FROM VARIOUS SMALL MINES OVER VERY LARGE AREA**
 - **STRONG LOCAL COMMUNITY SUPPORT FOR THE LAS CUCHARAS PROJECT**
 - **STRONG GOLD-SILVER AND GOLD-SILVER-COPPER-LEAD-ZINC RESULTS FROM CURRENT AND PAST EXPLORATION WORK**
 - **POTENTIAL FOR VERY LARGE SCALE DISCOVERY WITH BOTH HIGH GRADE PRECIOUS METAL AND LARGE TONNAGE BASE METAL RICH ZONES**

TERRENO RESOURCES CORPORATION

2021 DIAMOND DRILL PROPOSAL

11 HOLES FOR
2,000 METRES



TERRENO RESOURCES CORPORATION

2021 DIAMOND DRILL PROPOSAL

TARGET DETAILS, HOLE ORIENTATIONS & PROJECTED FINAL DEPTHS

SITE	COORDINATES UTM		AZIMUTH	INCL.	DEPTH (m)	TARGET	CONCESSION
	E	N					
LA UNION Y EL CARDON							
A	468392	2526335	55°	-50	300.00	Vetas Las Lumbres & El Cardón	HUAJICORI
B	468443	2526406	55°	-50	200.00	Vetas Las Lumbres & El Cardón	HUAJICORI
LOS GALLOS							
C	468345	2525510	20°	-50	100.00	Veta Los Gallos	HUAJICORI
D	468345	2525510	60°	-50	110.00	Veta Los Gallos	HUAJICORI
E	468390	2525440	60°	-50	110.00	Veta Los Gallos	HUAJICORI
TAVERNA-JOCUXTLE-LA ITALIA							
F	469520	2523935	65°	-50	200.00	Veta El Jocuixtle.	HUAJICORI 1
G	469580	2523780	65°	-50	200.00	Veta El Jocuixtle.	HUAJICORI 1
H	469770	2523580	65°	-50	220.00	Veta La Italia.	HUAJICORI 1
LA RAIZURA							
I	469761	2522070	45°	-60	240.00	Veta La Raizura - deeper intersection	MINERVA
J	469761	2522070	70°	-50	200.00	Veta La Raizura	MINERVA
LA PLANTA							
K	469000	2524250	225°	-60	120.00	La Planta mineralized breccia zone	HUAJICORI FRAC 1
				TOTAL	2000.00	Meters	

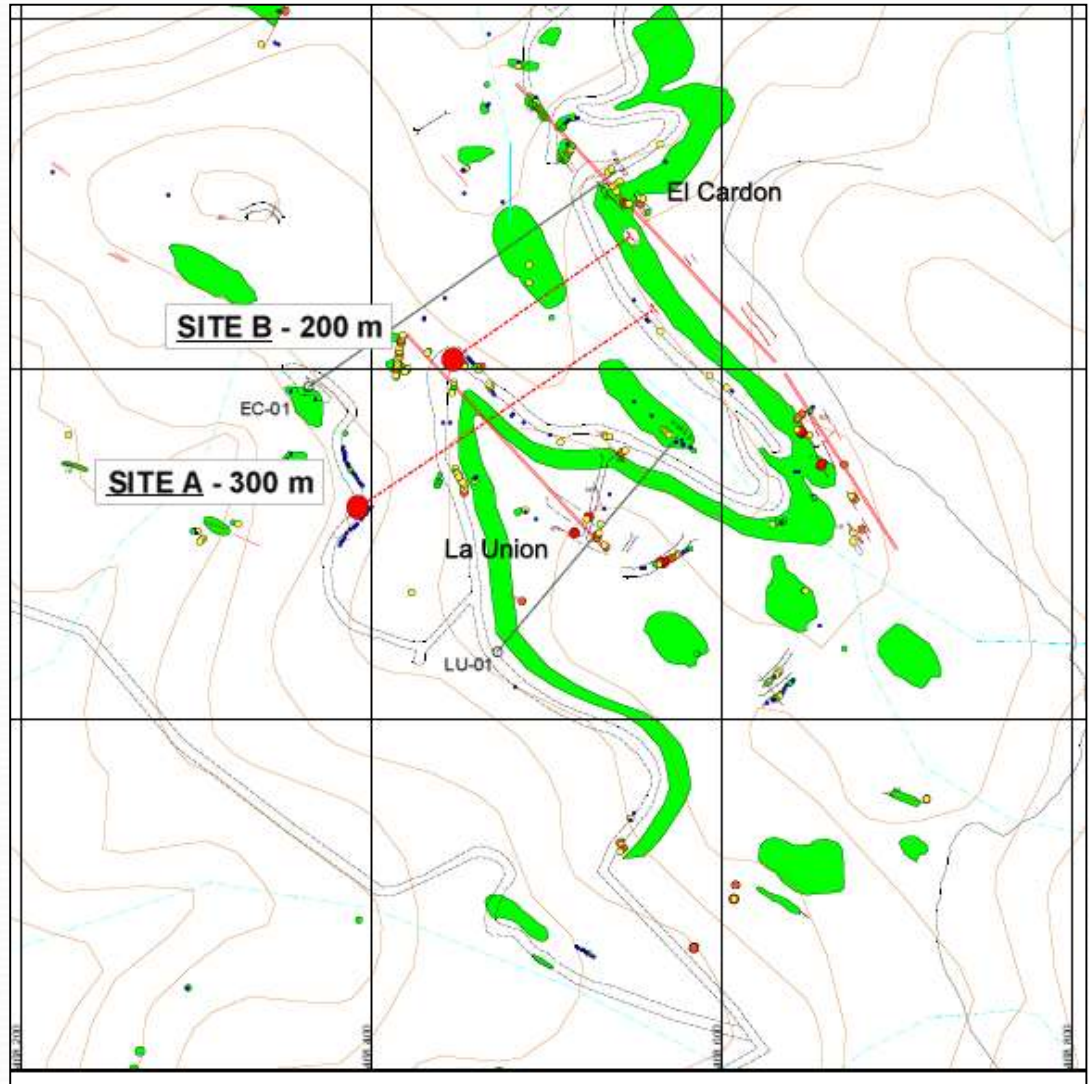
TERRENO RESOURCES CORPORATION

LAS CUCHARAS Au-Ag PROJECT

LA UNION, EL CARDON ZONES

DRILL SITES A, B

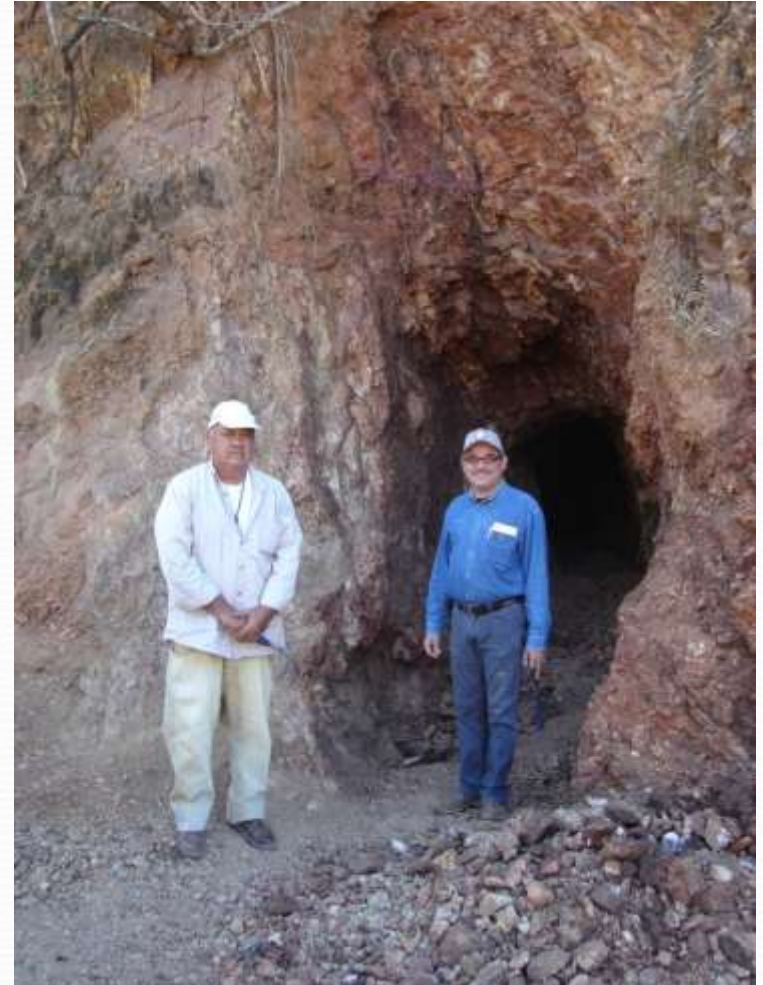
- **SIGNIFICANT HISTORICAL PRODUCTION:**
 - 130,000 t 9.3 g/t Au and 761 g/t Ag = 34,000 oz Au and 2.6m oz Ag (appr. \$123m at \$1,800/oz Au & \$24/oz Ag):
 - 6 LEVELS: 200 (L) x 120 (V) x 2m:
 - PAST MINING LIMITED BY WATER TABLE
- **DRILL HOLES:**
 - EC-01 – 9.1 g/t Au and 16.4 g/t Ag over 3.5m
 - LU-01 – 3.0 g/t Au and 36.5 g/t Ag over 3.2m
- **GRAB SAMPLE FROM INFORMAL MINER'S STOCKPILE 22.8 g/t Au and 1,901 g/t Ag**



TERRENO RESOURCES CORPORATION

LAS CUCHARAS Au-Ag PROJECT

- OLD MILL BASES AT LA UNION - EL CARDON ZONE
- GEOLOGISTS LEONARDO ARREOLA & LUIS FELIX



TERRENO RESOURCES CORPORATION

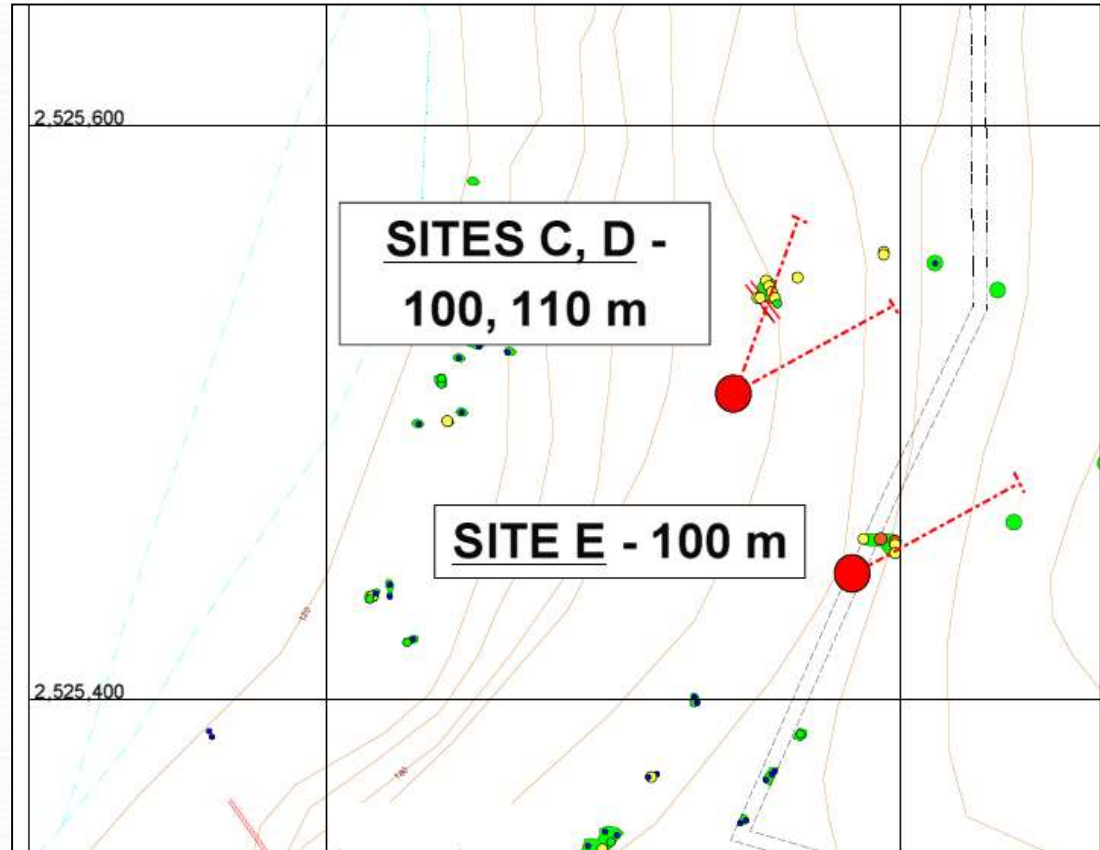
**LAS CUCHARAS Au-Ag
PROJECT**

LOS GALLOS ZONE

DRILL SITES C, D, E

• UNDERGROUND SAMPLING –

**WEIGHTED AVERAGE OF 15
CHANNEL SAMPLES ACROSS
STRUCTURE ON BACK OF
STOPE OVER 32 m x 2.25 m:
3.3 g/t Au and 154.8 g/t Ag**



TERRENO RESOURCES CORPORATION

LAS CUCHARAS Au-Ag PROJECT

LOS GALLOS ZONE

2021 UNDERGROUND & SURFACE SAMPLING

- 16.4 g/t Au and 262 g/t Ag over 0.60m
- 5.1 g/t Au and 406 g/t Ag over 0.90 m
- 22.8 g/t Au and 1,056 g/t Ag – hand select ore from informal miner stockpile



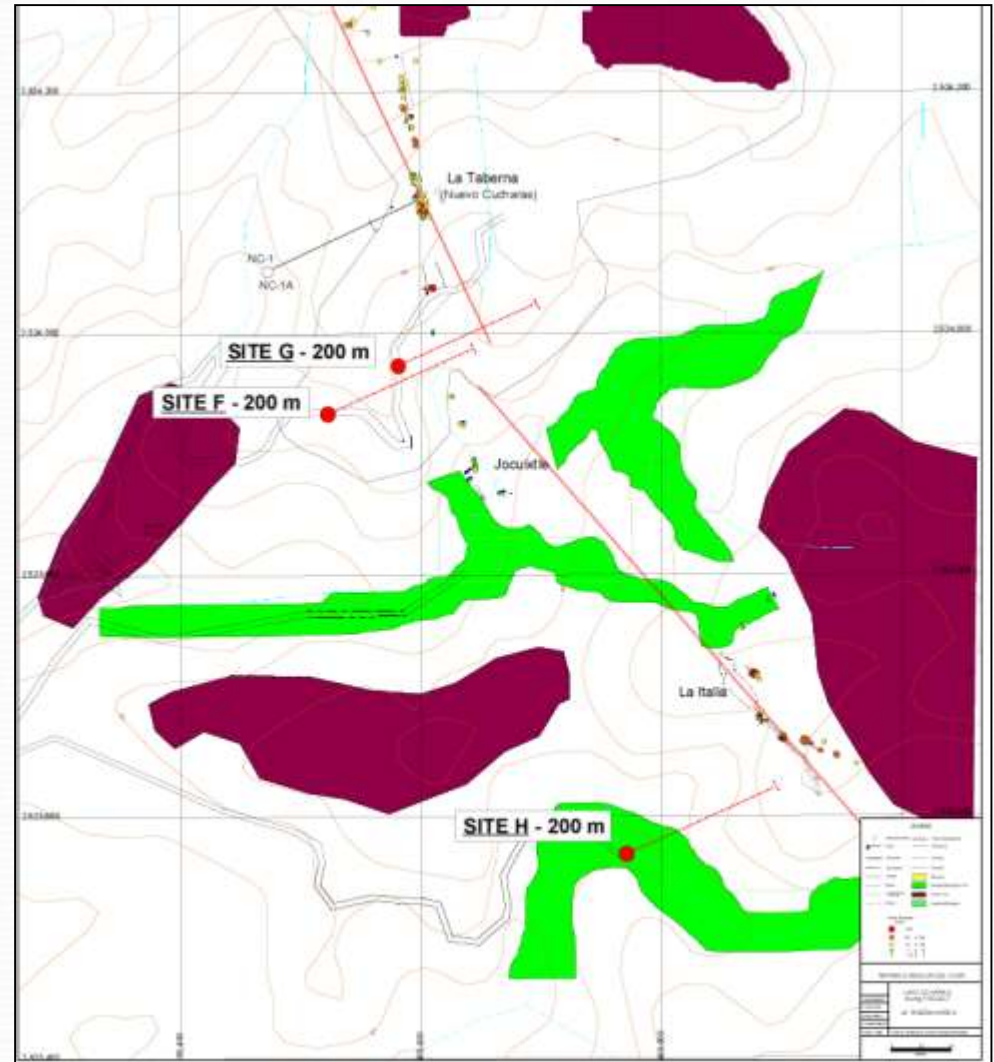
TERRENO RESOURCES CORPORATION

LAS CUCHARAS Au-Ag PROJECT

LA TAVERNA – JOCUIXTLE – LA ITALIA ZONE

DRILL SITES F, G, H

- SIGNIFICANT HISTORICAL PRODUCTION – COLLAPSED 250 x 10 m WORKING
- NC-01A - 0.33 g/t Au and 141.6 g/t Ag over 1.5 m
- SURFACE SAMPLES
 - 18.9 g/t Au and 317 g/t Ag over 0.3m
 - 0.7 g/t Au and 807 g/t Ag over 1.0 m
 - 246 g/t Ag and 1.05% Cu over 0.4 m



TERRENO RESOURCES CORPORATION

LAS CUCHARAS Au-Ag PROJECT

LA TAVERNA – JOCUIXTLE – LA
ITALIA ZONES

SURFACE SAMPLING AT
JOCUIXTLE

- 3.3 g/t Au and 710 g/t Ag over 1.3
metres

- 1.1 g/t Au, 106 g/t Ag, 0.77% Cu,
0.32% Pb, 0.54% Zn over 1.3
metres



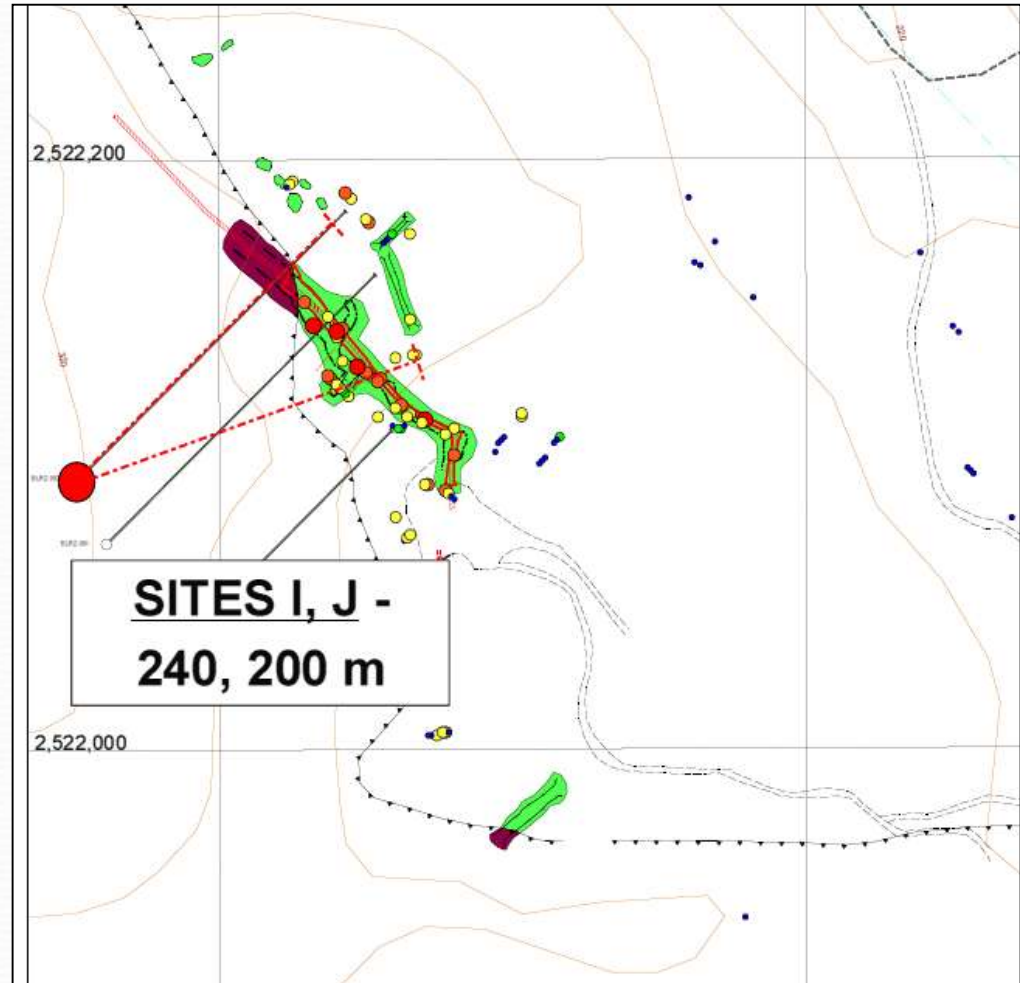
TERRENO RESOURCES CORPORATION

LAS CUCHARAS Au-Ag PROJECT

LA RAIZURA ZONE

DRILL SITES I, J

- SIGNIFICANT HISTORICAL PRODUCTION – 100 m DRIFT
- BL RZ001 - 2.9 g/t Au and 13.3 g/t Ag over 2.7 m
- BL RZ003 – 2.5 g/t Au and 103.9 g/t Ag over 7.4 m
- UNDERGROUND SAMPLING
3 g/t Au and 292 g/t Ag WEIGHTED AVERAGE OF SAMPLING ACROSS BACK OF STOPE OVER 71 x 2 m AREA



TERRENO RESOURCES CORPORATION

**LAS CUCHARAS Au-Ag PROJECT
UNDERGROUND WORKINGS**

**LA RAIZURA ZONE
- CHECK SAMPLE ON STRUCTURE
BELOW – 13.9 g/t Au, 856 g/t Ag**



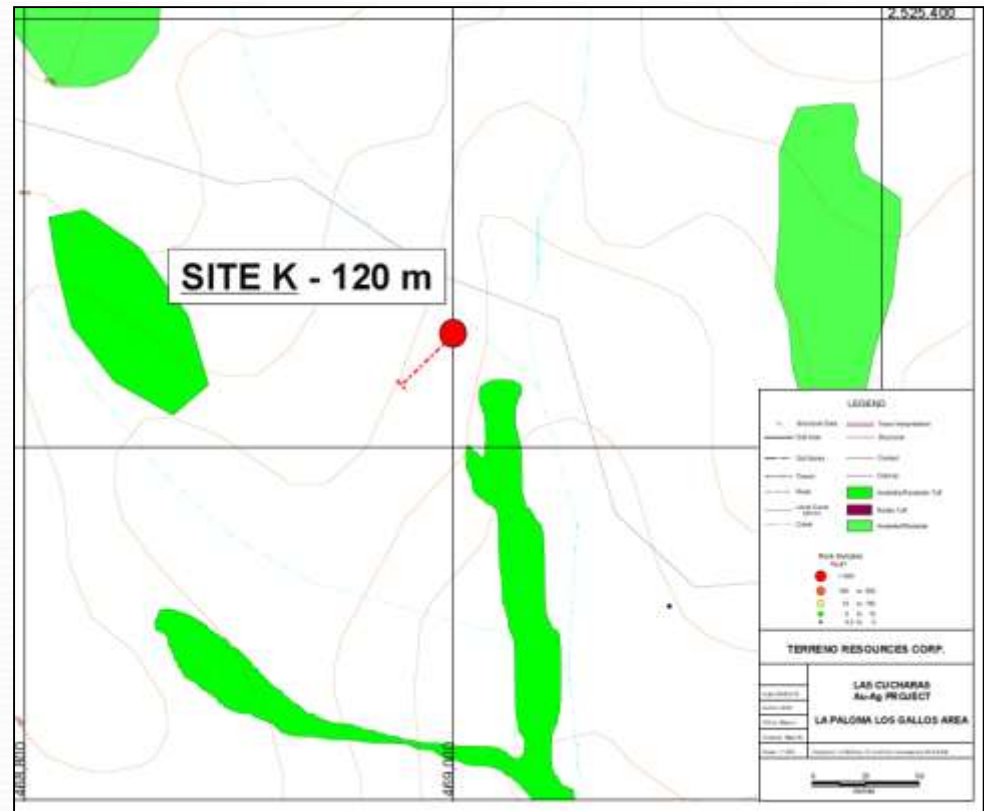
TERRENO RESOURCES CORPORATION

LAS CUCHARAS Au-Ag PROJECT

LA PLANTA ZONE

DRILL SITE K

- 2021 SURFACE CHANNEL SAMPLING
17.9 g/t Ag, 0.24% Cu, 0.66% Pb,
1.42% Zn over 18.2 m



TERRENO RESOURCES CORPORATION

LAS CUCHARAS Au-Ag PROJECT

LA PLANTA ZONE

- OXIDIZED BRECCIA**
- EXPLORATION ADIT: SAMPLE LINE**



TERRENO RESOURCES CORPORATION

LAS CUCHARAS Au-Ag PROJECT



Mechanized mill (tauna) for hand selected ore, local prospector.

TERRENO RESOURCES CORPORATION

TNO.H:NEX

**Suite 1102, 44 Victoria Street,
Toronto ON, M5C 1Y2**

**George Brown, CEO
Tel (905) 467-1109
georgebrown0955@gmail.com**